

# 62' CC SUPERSTRUCTURE

*SKL*



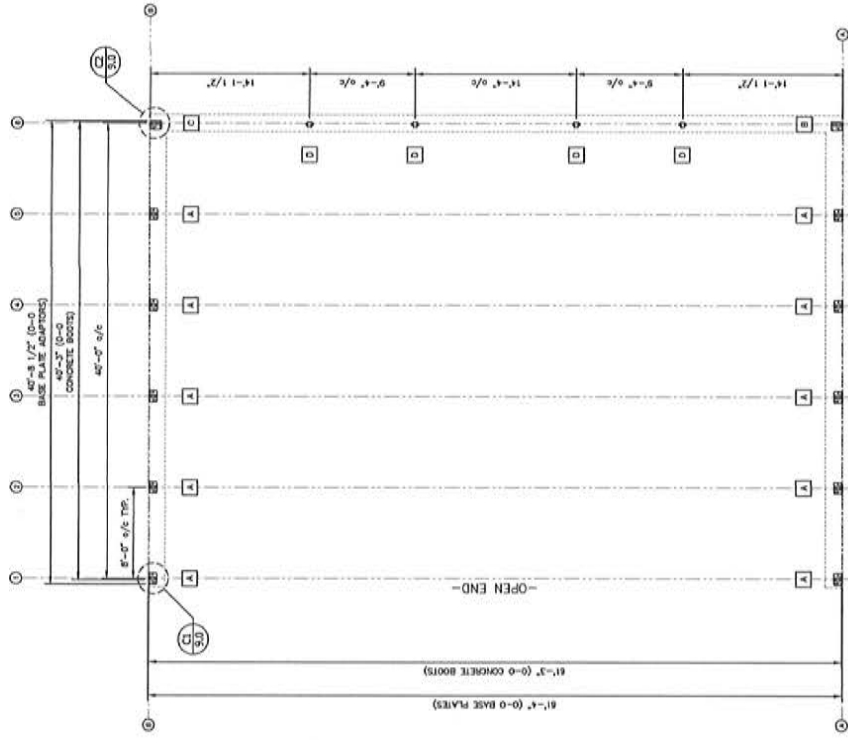
SITE LOCATION		
LAT / LONG	APPROX. 43°14'43"N, 77°43'00"W	
ADDRESS	1750 TUD AVENUE	
CITY/TOWN	ROCKSTER	
STATE	NEW YORK	
COUNTRY	USA	
PROJECT DESCRIPTION		
DEALER	HYBRID BUILDING SOLUTIONS	
OWNER'S NAME	TOWN OF ROCKSTER	
MODEL	CC - REDWOOD	
WIDTH X LENGTH	62' X 42'	
TRUSS SPACING	8' 6 1/2"	
FABRIC TYPE	Q350HW 12.1 oz/ft <sup>2</sup> PE NON-FR	
USE AND OCCUPANCY	COMMERCIAL - LOW HAZARD	
DECK CRITERIA	SNOW LOAD 140 PSF	
	WIND LOAD 80 MPH, 1" EXPOSURE	
DRAWING INDEX		
DWG No.	SHEET No.	TITLE
1.0	1 OF 10	TITLE SHEET
2.0	2 OF 10	GENERAL STRUCTURAL NOTES
3.0	3 OF 10	FOUNDATION PLAN
4.0	4 OF 10	FRAMING PLAN
5.0	5 OF 10	ELEVATION A
6.0	6 OF 10	ELEVATION B
7.0	7 OF 10	ELEVATION C
8.0	8 OF 10	EXTENSION LAYOUT
9.0	9 OF 10	DETAILS
10.0	10 OF 10	DETAILS

**TITLE SHEET**  
62' CC SERIES  
403598 62X40 R1

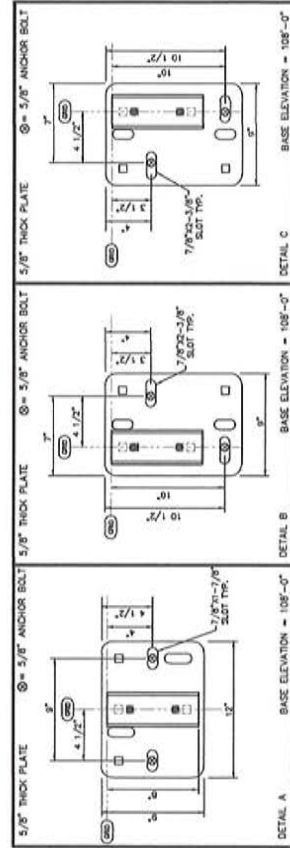
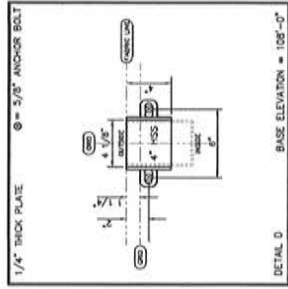
<p>Calhoun Superstructure LLC 1750 Tud Avenue Rockster, NY 12556 www.calhounsuperstructure.com 800-368-3683</p>	<p>DATE: 08/28/14 SCALE: AS SHOWN DRAWN BY: SKL CHECKED BY: [ ] DATE: 08/28/14 SCALE: AS SHOWN DRAWN BY: SKL CHECKED BY: [ ]</p>
<p>1. EXHIBIT APPROVAL</p>	<p>DATE: 08/28/14 SCALE: AS SHOWN DRAWN BY: SKL CHECKED BY: [ ]</p>
<p>NO. DESCRIPTION</p>	<p>DATE: 08/28/14 SCALE: AS SHOWN DRAWN BY: SKL CHECKED BY: [ ]</p>
<p>REVISION / DESC.</p>	<p>DATE: 08/28/14 SCALE: AS SHOWN DRAWN BY: SKL CHECKED BY: [ ]</p>

N.T.S. 1 OF 10  
1.0





SKL



**NOTE:**  
 BUILDING DESIGNED AS FREE  
 STANDING REQUIRING MINIMUM  
 OF 50' CLEARANCE ON ALL 4  
 SIDES.

- GENERAL NOTES**
1. VERIFY ALL DIMENSIONS PRIOR TO CONSTRUCTION. RESOLVE DISCREPANCIES WITH THE BUILDING SUPPLIER.
  2. FINISHED FLOOR ELEVATION THIS SHEET = 100'-0" U.L.O.
  3. ALL CONCRETE COMPONENTS ARE SUPPLIED BY OTHERS.

**FOUNDATION DESIGNED AND SUPPLIED BY OTHERS**

**CALHOUN SUPERSTRUCTURE**

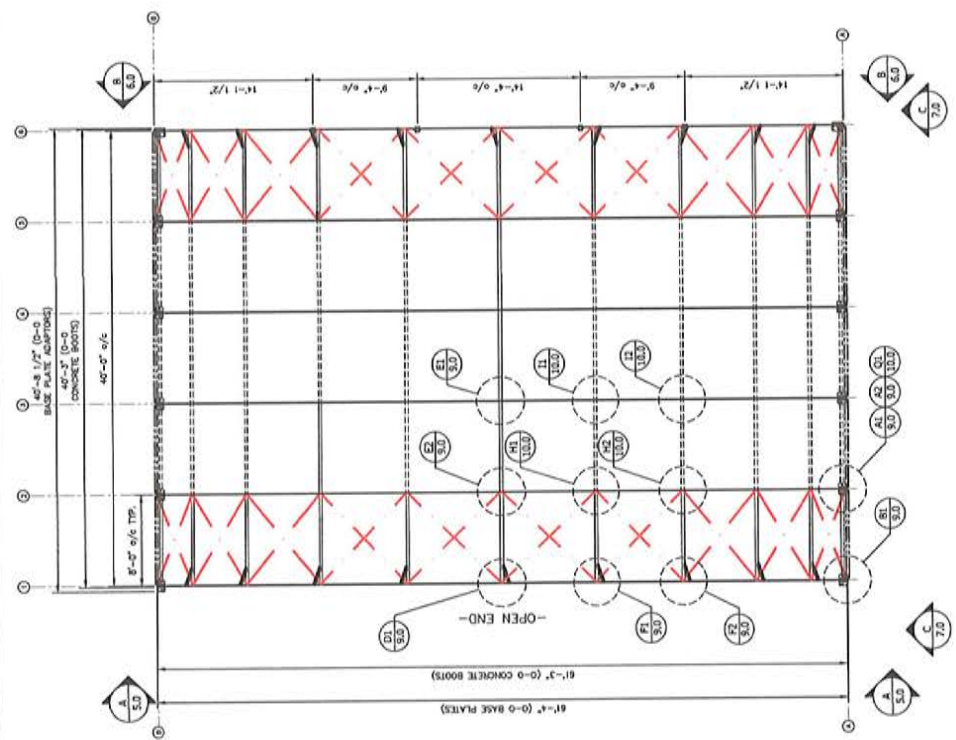
**FOUNDATION PLAN**  
 62'-00" SERIES  
 403598 62X40 R1

DATE	11/11/2014
DESIGNED BY	SKL
CHECKED BY	SKL
SCALE	AS SHOWN
PROJECT NO.	403598
CLIENT	UNIVERSITY MICROFILMS
LOCATION	UNIVERSITY MICROFILMS
DESCRIPTION	FOUNDATION PLAN
REVISION / DATE	

3.0 OF 10



*Stiller*



**MAIN BUILDING COVER INFORMATION**

FABRIC TYPE	COVER INFORMATION
MEDDED PANELS	RECALLED THROUGH DESIGNER'S DETAILS

FOUNDATION DESIGNED AND SUPPLIED BY OTHERS

**CALHOUN SUPERSTRUCTURE**

FRAMING PLAN  
827 CC SERIES  
400598 62K40 R1

DATE: 3/18/11

SCALE: 4.0

NO. 4 OF 10

**FRAMING SCHEDULE**

LOADS	DESCRIPTION	SECTION	QUANTITY	COMMENTS
C	TYPICAL PURLIN	2-3/8" x 8"	13	UNGRADED BAYS
	TYPICAL PURLIN	2-7/8" x 8"	14	GRADED BAYS / ROOF
	BRACE PURLIN	U 2"x2"	11	DO NOT BAYS ONLY
	TENSION TUBE	2-3/8" x 8"	13	ALL BAYS
	ROOF TRUSS CABLE	3/4" DIA. GALV. 600 LBS	13	HAND NOT 4-1/2" REVOLUTION AND 1/2" REVOLUTION

**CABLE TENSIONING SCHEDULE:**

LOADS	DESCRIPTION	SECTION	QUANTITY	COMMENTS
	HAND NOT	3/4" DIA. GALV. 600 LBS	13	4-1/2" REVOLUTION
	ROOF TRUSS CABLE	3/4" DIA. GALV. 600 LBS	13	1/2" REVOLUTION

**TASP PRE-TENSION SCHEDULE**

FRAME SPACING	SPACE TUBE SIZE	TUBE COUPLER AT CORNER
6'	2-3/8" x 8"	1-1/4"
8'	2-3/8" x 8"	1-1/2"
10'	2-3/8" x 8"	1"
12'	2-3/8" x 8"	2-1/4"
14'	2-7/8" x 8"	3-1/4"
16'	2-7/8" x 8"	3-1/2"
18'	2-7/8" x 8"	3-1/2"

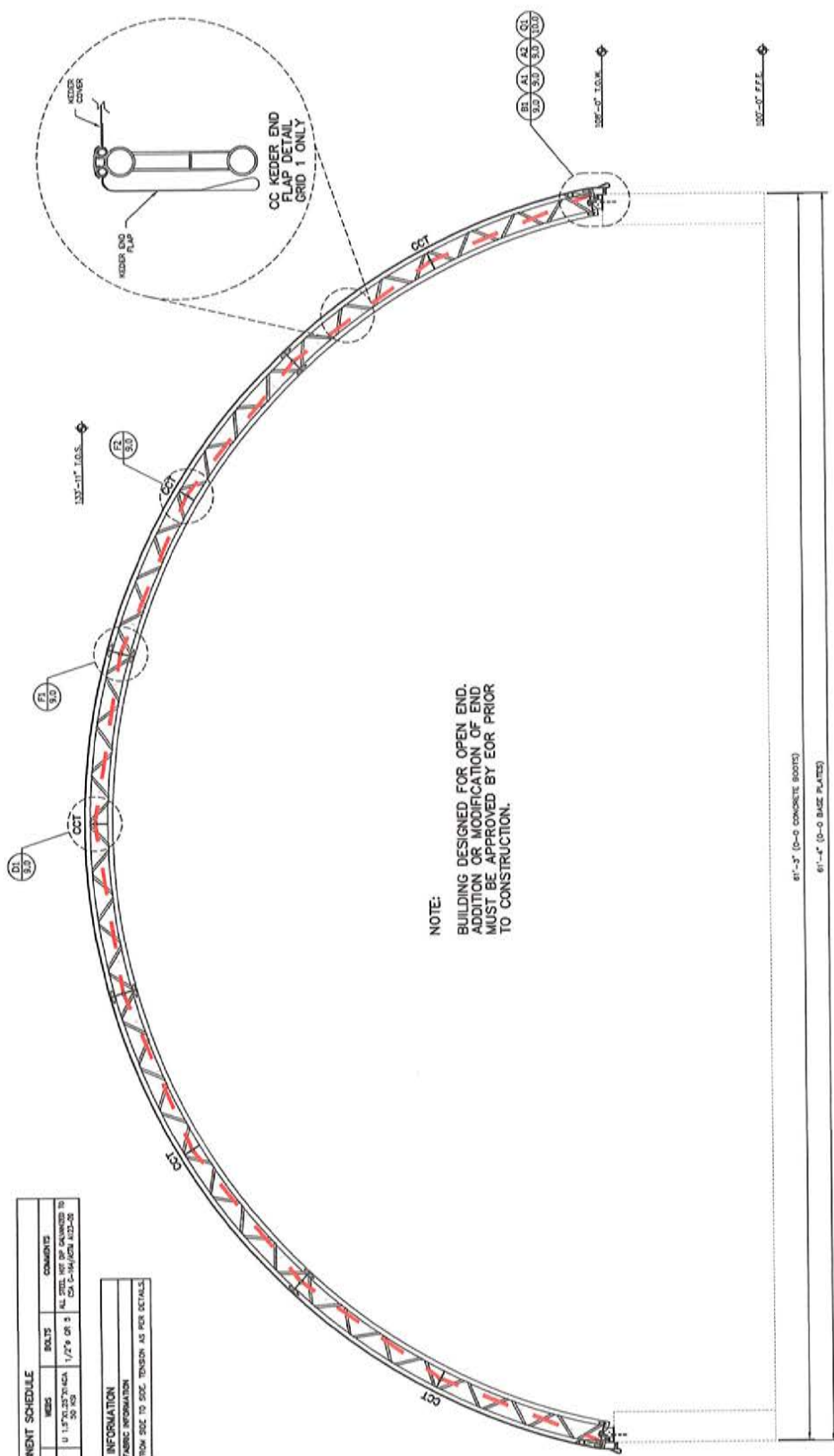
DO NOT USE FOR INTERIOR BAYS, USE FOR PHYSICAL POSITION OF TUBE SECTIONS

- GENERAL NOTES**
- VERIFY ALL DIMENSIONS PRIOR TO CONSTRUCTION. RESOLVE DISCREPANCIES WITH THE BUILDING SUPPLIER.
  - FINISHED FLOOR ELEVATION THIS SHEET = 107'-0" U.L.S.D.
  - ALL CONCRETE COMPONENTS ARE SUPPLIED BY OTHERS.

COMPONENT SCHEDULE			
MARK	DESCRIPTION	QUANTITY	COMMENTS
CCT	CC SERIES TRUSS COMPONENT	2-7/8" x 8.110"	ALL STEEL NOT SHOWN TO BE CONFORMING TO AISC-360

END WALL FABRIC INFORMATION	
FABRIC TYPE	INSTALL IN EXTENSION FROM SEE TO SEE TENSION AS PER DETAILS
KEDER END FLAP	

*Handwritten signature/initials*



**NOTE:**  
BUILDING DESIGNED FOR OPEN END.  
ADDITION OR MODIFICATION OF END  
MUST BE APPROVED BY EOR PRIOR  
TO CONSTRUCTION.

81'-3" (0-0 CONCRETE BOOT)  
81'-4" (0-0 BASE PLATES)

GRIDLINE 1

LOADS	DESCRIPTION	SECTION	CA/GAS	COMMENTS
1	HOOF TRUSS CABLE	5/16" GALV. T301 CABLE	600 LBS	HOOF TRUSS CABLE TO SLACK FOR HAND TIGHT + 1/2 REVOLUTION.
2	CABLE TENSIONING STRINGS			
3	HAND TIGHT			1. HAND TIGHT TURNS AS ABOVE USING A CHOKER BAR OR WRENCH (NO TENSION CABLE)
4	SLACK TO SLACK			2. SLACK TO SLACK TURNS AS ABOVE USING A CHOKER BAR OR WRENCH (FINAL TENSIONING 600 LBS)
5	FINAL TENSIONING			3. FINAL TENSIONING TURNS AS ABOVE USING A CHOKER BAR OR WRENCH (FINAL TENSIONING 600 LBS)

- GENERAL NOTES**
- VERIFY ALL DIMENSIONS PRIOR TO CONSTRUCTION. RESOLVE DISCREPANCIES WITH THE BUILDING SUPPLIER.
  - FINISHED FLOOR ELEVATION THIS SHEET = 100'-0" U.N.G.
  - ALL CONCRETE COMPONENTS ARE SUPPLIED BY CH20H.

**FOUNDATION DESIGNED AND SUPPLIED BY OTHERS**

**CALHOUN SUPERSTRUCTURE**

**ELEVATION A**  
62' CC SERIES  
400398 62X40 R1

DATE: 3/15/11  
SCALE: 1/8" = 1'-0"

NO. 5.0

DATE: 3/15/11

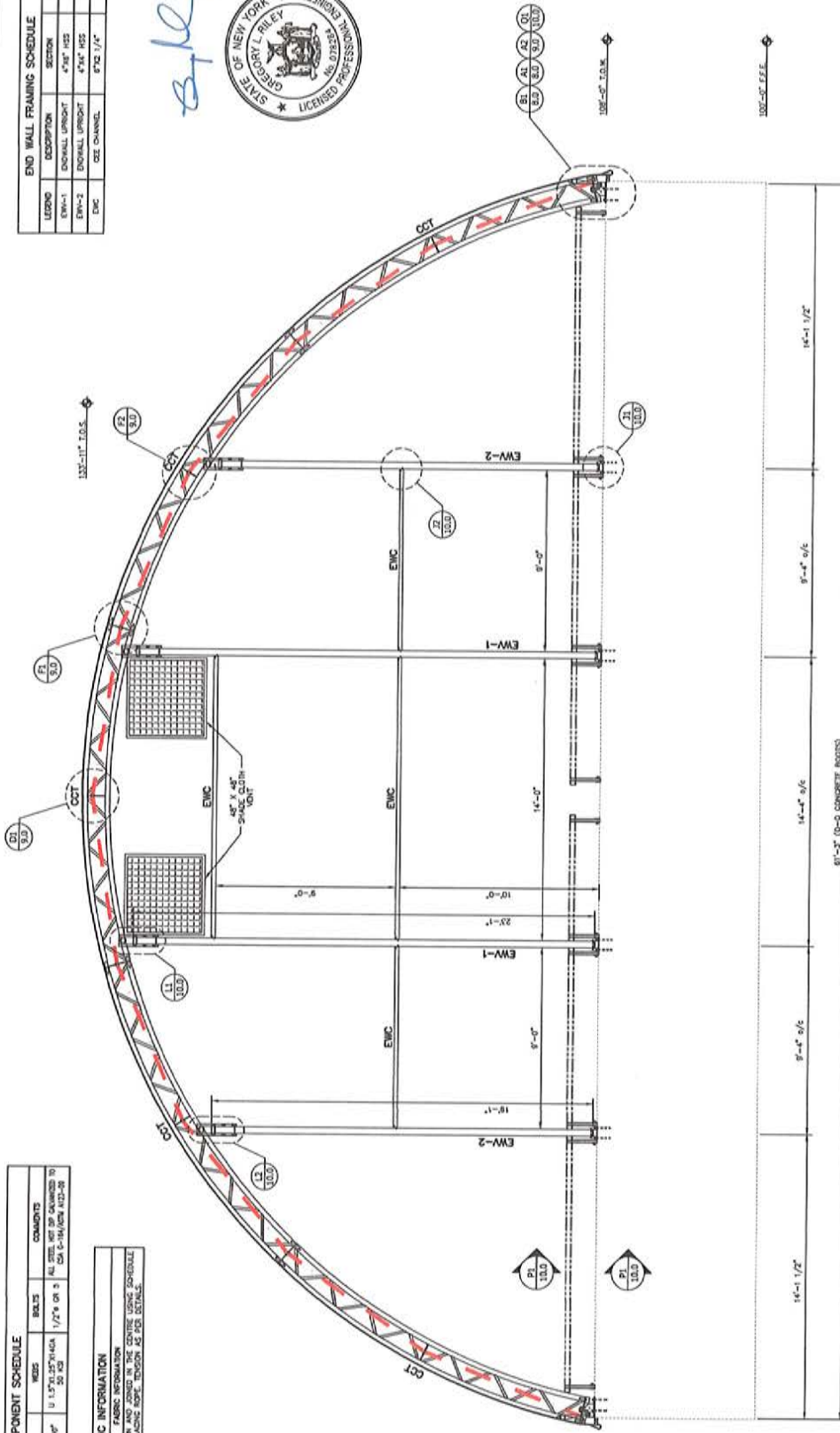
END WALL FRAMING SCHEDULE			
LEADING	DESCRIPTION	SECTION	GAUGE
EW-1	ENDWALL UPRIGHT	4" X 8" HSS	1/4"
EW-2	ENDWALL UPRIGHT	4" X 6" HSS	1/4"
EW-3	CEE CHANNEL	8" X 6" CEE	1/4"

*Site*



COMPONENT SCHEDULE			
MARK	DESCRIPTION	QUANTITY	COMMENTS
CCT	CC SERIES TRUSS COMPONENT	1	ALL STEEL NOT SHOWN DIMENSIONS TO PER AISC 136/141/142/143/144/145/146/147/148/149/150/151/152/153/154/155/156/157/158/159/160/161/162/163/164/165/166/167/168/169/170/171/172/173/174/175/176/177/178/179/180/181/182/183/184/185/186/187/188/189/190/191/192/193/194/195/196/197/198/199/200/201/202/203/204/205/206/207/208/209/210/211/212/213/214/215/216/217/218/219/220/221/222/223/224/225/226/227/228/229/230/231/232/233/234/235/236/237/238/239/240/241/242/243/244/245/246/247/248/249/250/251/252/253/254/255/256/257/258/259/260/261/262/263/264/265/266/267/268/269/270/271/272/273/274/275/276/277/278/279/280/281/282/283/284/285/286/287/288/289/290/291/292/293/294/295/296/297/298/299/300/301/302/303/304/305/306/307/308/309/310/311/312/313/314/315/316/317/318/319/320/321/322/323/324/325/326/327/328/329/330/331/332/333/334/335/336/337/338/339/340/341/342/343/344/345/346/347/348/349/350/351/352/353/354/355/356/357/358/359/360/361/362/363/364/365/366/367/368/369/370/371/372/373/374/375/376/377/378/379/380/381/382/383/384/385/386/387/388/389/390/391/392/393/394/395/396/397/398/399/400/401/402/403/404/405/406/407/408/409/410/411/412/413/414/415/416/417/418/419/420/421/422/423/424/425/426/427/428/429/430/431/432/433/434/435/436/437/438/439/440/441/442/443/444/445/446/447/448/449/450/451/452/453/454/455/456/457/458/459/460/461/462/463/464/465/466/467/468/469/470/471/472/473/474/475/476/477/478/479/480/481/482/483/484/485/486/487/488/489/490/491/492/493/494/495/496/497/498/499/500/501/502/503/504/505/506/507/508/509/510/511/512/513/514/515/516/517/518/519/520/521/522/523/524/525/526/527/528/529/530/531/532/533/534/535/536/537/538/539/540/541/542/543/544/545/546/547/548/549/550/551/552/553/554/555/556/557/558/559/560/561/562/563/564/565/566/567/568/569/570/571/572/573/574/575/576/577/578/579/580/581/582/583/584/585/586/587/588/589/590/591/592/593/594/595/596/597/598/599/600/601/602/603/604/605/606/607/608/609/610/611/612/613/614/615/616/617/618/619/620/621/622/623/624/625/626/627/628/629/630/631/632/633/634/635/636/637/638/639/640/641/642/643/644/645/646/647/648/649/650/651/652/653/654/655/656/657/658/659/660/661/662/663/664/665/666/667/668/669/670/671/672/673/674/675/676/677/678/679/680/681/682/683/684/685/686/687/688/689/690/691/692/693/694/695/696/697/698/699/700/701/702/703/704/705/706/707/708/709/710/711/712/713/714/715/716/717/718/719/720/721/722/723/724/725/726/727/728/729/730/731/732/733/734/735/736/737/738/739/740/741/742/743/744/745/746/747/748/749/750/751/752/753/754/755/756/757/758/759/760/761/762/763/764/765/766/767/768/769/770/771/772/773/774/775/776/777/778/779/780/781/782/783/784/785/786/787/788/789/790/791/792/793/794/795/796/797/798/799/800/801/802/803/804/805/806/807/808/809/810/811/812/813/814/815/816/817/818/819/820/821/822/823/824/825/826/827/828/829/830/831/832/833/834/835/836/837/838/839/840/841/842/843/844/845/846/847/848/849/850/851/852/853/854/855/856/857/858/859/860/861/862/863/864/865/866/867/868/869/870/871/872/873/874/875/876/877/878/879/880/881/882/883/884/885/886/887/888/889/890/891/892/893/894/895/896/897/898/899/900/901/902/903/904/905/906/907/908/909/910/911/912/913/914/915/916/917/918/919/920/921/922/923/924/925/926/927/928/929/930/931/932/933/934/935/936/937/938/939/940/941/942/943/944/945/946/947/948/949/950/951/952/953/954/955/956/957/958/959/960/961/962/963/964/965/966/967/968/969/970/971/972/973/974/975/976/977/978/979/980/981/982/983/984/985/986/987/988/989/990/991/992/993/994/995/996/997/998/999/1000

END WALL FABRIC INFORMATION	
FABRIC TYPE	INSTALL TO EXISTING END WALL FABRIC INFORMATION
FABRIC INFORMATION	INSTALL TO EXISTING END WALL FABRIC INFORMATION



FOUNDATION DESIGNED AND SUPPLIED BY OTHERS

**CALHOUN SUPERSTRUCTURE**

**ELEVATION B**  
62' CC SERIES  
403598 62X40 R1

DATE: 2/18/14  
SCALE: 1/8" = 1'-0"

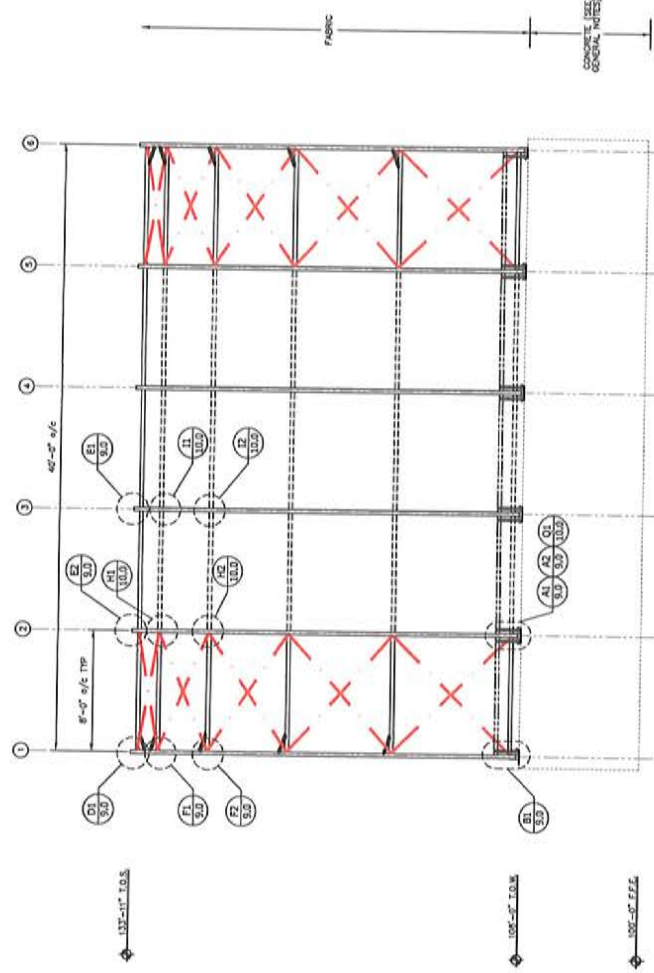
CABLE SCHEDULE			
LEADING	DESCRIPTION	SECTION	COMMENTS
1	HOOP TRUSS CABLE	5/16" x 48" GALV. STEEL	HOOP TRUSS CABLE
2	STRETCH CABLE	7/16" x 48" GALV. STEEL	STRETCH CABLE

CABLE TENSIONING SCHEDULE:

1. TENSIONING TO BE DONE AS ABOVE USING A GREATER BAR OR WRENCH (NO STRETCH CABLE)
2. TENSIONING TO BE DONE AS ABOVE USING A GREATER BAR OR WRENCH (NO STRETCH CABLE)
3. TENSIONING TO BE DONE AS ABOVE USING A GREATER BAR OR WRENCH (NO STRETCH CABLE)
4. TENSIONING TO BE DONE AS ABOVE USING A GREATER BAR OR WRENCH (NO STRETCH CABLE)
5. TENSIONING TO BE DONE AS ABOVE USING A GREATER BAR OR WRENCH (NO STRETCH CABLE)

- GENERAL NOTES**
1. VERIFY ALL DIMENSIONS PRIOR TO CONSTRUCTION. RESOLVE DISCREPANCIES WITH THE BUILDING SUPPLIER.
  2. FINISHED FLOOR ELEVATION THIS SHEET = 100'-0" U.N.G.
  3. ALL CONCRETE COMPONENTS ARE SUPPLIED BY OTHERS.

8/16



GRIDLINE A / B

MAIN BUILDING COVER INFORMATION	
FABRIC TYPE	CONCRETE
COVER INFORMATION	RECYCLED THROUGH EXTRUSION METHOD
GENERAL NOTES	SEE TO SPEC TENSION DETAIL

FRAMING SCHEDULE				
LEGEND	DESCRIPTION	SECTION	QTY/LOAD	COMMENTS
C	TYPICAL PURLIN	2-3/8"	13	UNBRACED BAYS
D	BRACE PURLIN	2-7/8"	14	BRACED BAYS / ROZE
E	BRACE PURLIN	0.270"	11	DO BAYS ONLY
F	TENSION TUBE	2-3/8"	13	ALL BAYS
G	ROOF TRUSS CABLE	3/16" CABLE	600 LBS	HAND TIGHT (5-7/8" RESOLUTION) LOSER TO SLACK HAND TIGHT H/2 RESOLUTION

1. HAND TIGHT  
 2. PURLIN SPACED TUBES AS ABOVE USING A CHARGER BAR OR WRENCH (70 SECTION CABLE)  
 3. PURLIN SPACED TUBES AS ABOVE USING A CHARGER BAR OR WRENCH (70 SECTION CABLE)  
 4. HAND TIGHT  
 5. PLUS SPECIFIED TURNS AS ABOVE USING A CHARGER BAR OR WRENCH (FINAL TENSIONING 600 LBS)

TARP PRE-TENSION SCHEDULE		
FRAME SPACING	TARP TENSION SIZE	WIRE TENSION AT CENTER
8'	2-3/8"	1/4"
10'	2-3/8"	1/2"
12'	2-3/8"	1"
14'	2-3/8"	2-1/4"
16'	2-3/8"	3-1/4"
18'	2-3/8"	4-1/4"
20'	2-3/8"	5-1/4"

1. ALL TARP PRE-TENSIONING SHALL BE DONE AND PHYSICAL INSPECTION OF TARP REQUIRED  
 2. TARP SHALL BE TENSIONED TO CONSTRUCTION, RESOLVE DISCREPANCIES WITH THE BUILDING SUBMITTALS  
 3. FINISHED FLOOR ELEVATION THIS SHEET = 100'-0" U.A.G.  
 4. ALL CONCRETE COMPONENTS ARE SUPPLIED BY OTHERS.

FOUNDATION DESIGNED AND SUPPLIED BY OTHERS

**CALHOUN SUPERSTRUCTURE**

**ELEVATION C**  
 E2 CC SERIES  
 483586 62X40 R1

1. DESIGNER: CALHOUN SUPERSTRUCTURE, LLC  
 2. DATE: 08/16/14  
 3. PROJECT: 100'-0" U.A.G.  
 4. SHEET: 7.0  
 5. TOTAL SHEETS: 10

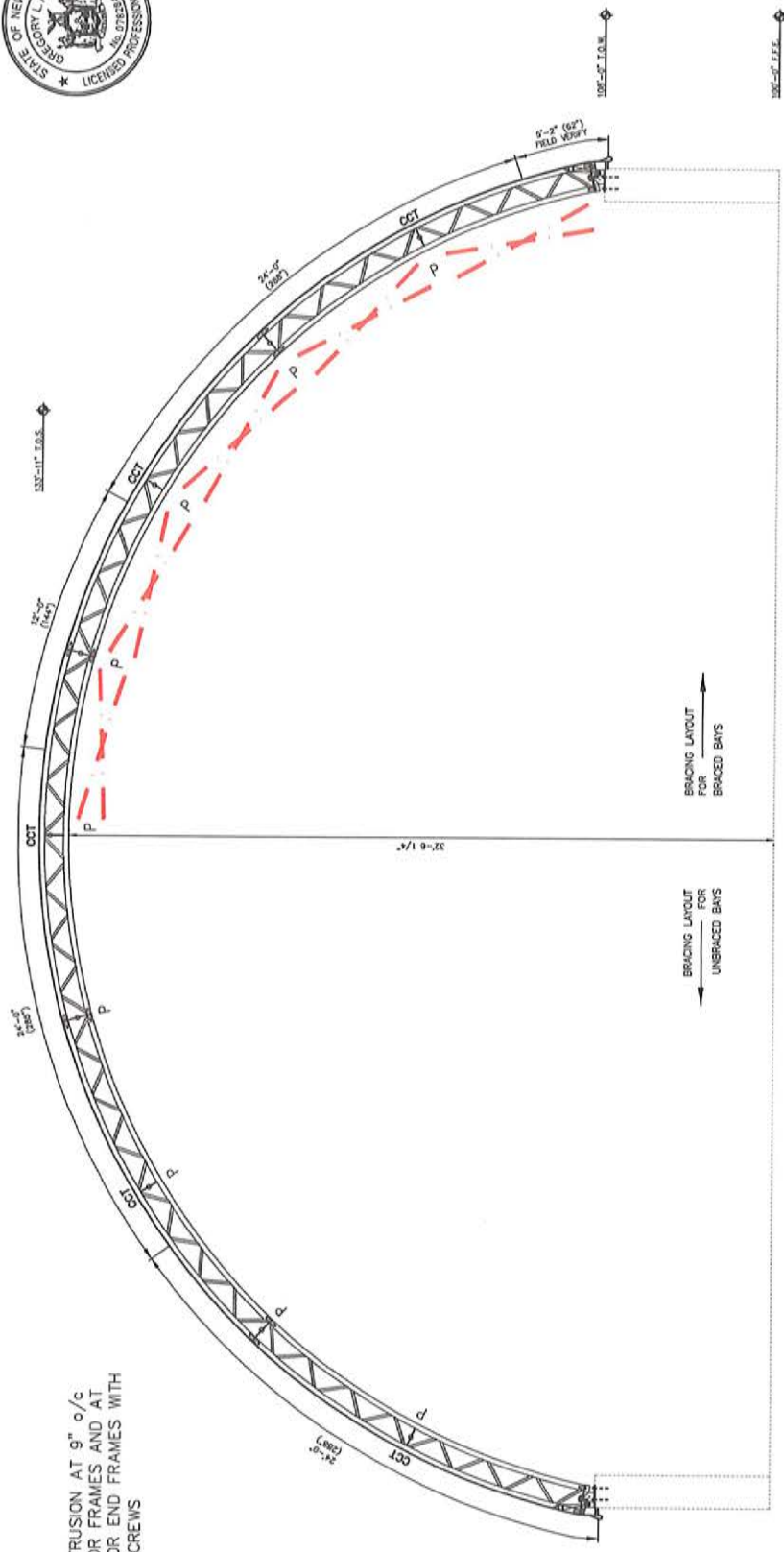


2/16



COMPONENT SCHEDULE			
MARK	DESCRIPTION	QUANTITY	COMMENTS
CC1	CC SERIES BRACES COMPONENT	2-7/8" x 8.10"	U 1.5770, 23.70444 50 KIP
	BOLTS	1/2" x 8" S	ALL STEEL NOT SP. GALVANIZED TO CSA C-154/1208 A12-08

NOTE:  
FASTEN EXTRUSION AT 9" o/c  
FOR INTERIOR FRAMES AND AT  
4.5" o/c FOR END FRAMES WITH  
1/4" TEK SCREWS



ALL GRIDS 1-6 INCLUSIVE  
ZERO TO ZERO = 87'-8"  
EXTRUSION LENGTH = 89'-2"  
TOTAL FABRIC PROFILE LENGTH = 89'-2"

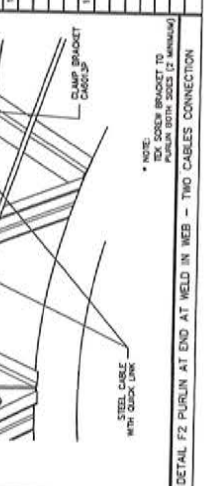
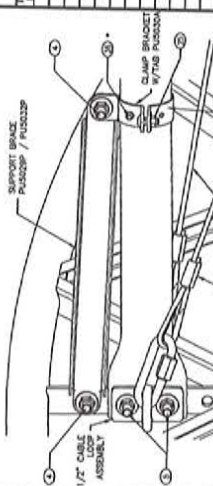
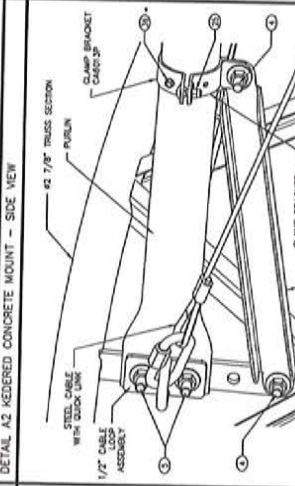
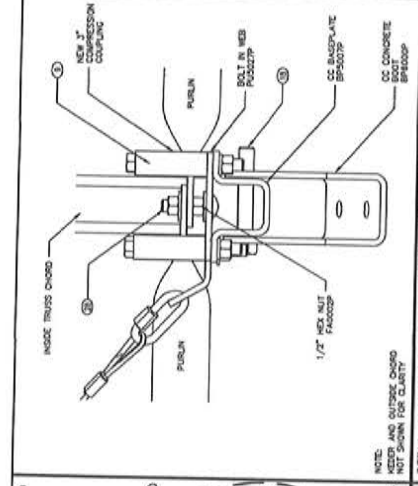
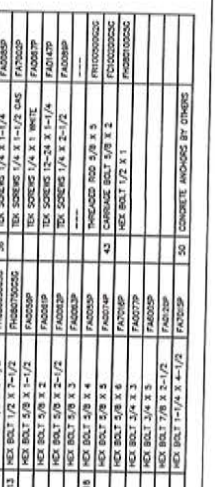
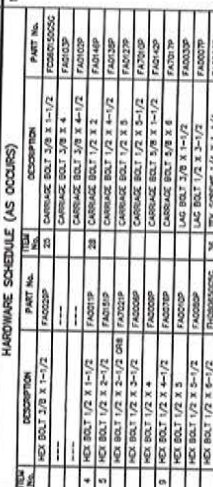
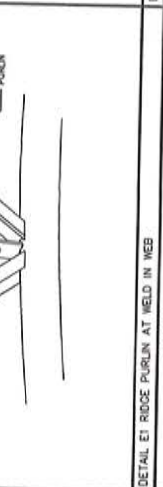
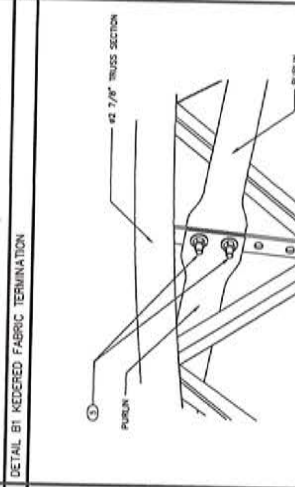
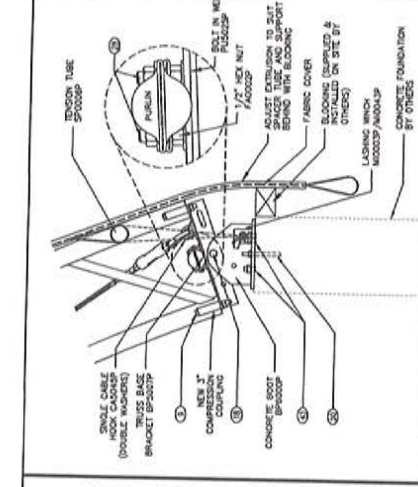
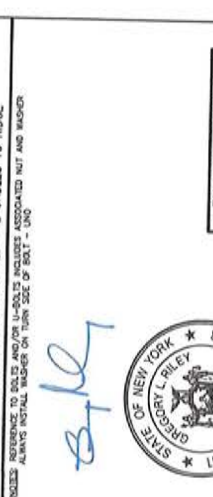
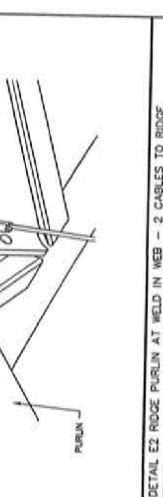
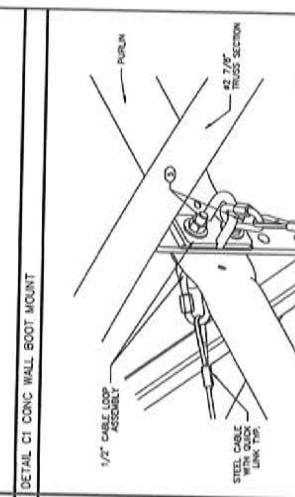
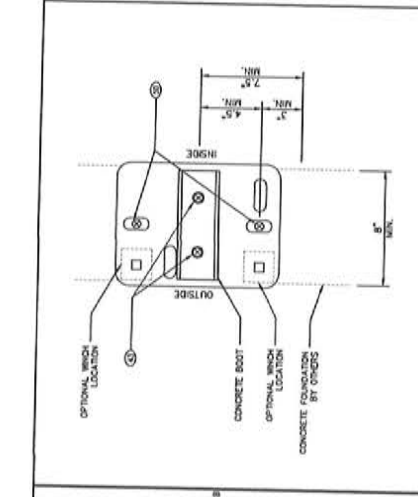
BRACING LEGEND	
MARK	DESCRIPTION
P	POURON

- GENERAL NOTES
1. VERIFY ALL DIMENSIONS PRIOR TO CONSTRUCTION. RESOLVE DISCREPANCIES WITH THE BUILDING SUPPLIER.
  2. FINISHED FLOOR ELEVATION THIS SHEET = 100'-0" UNAD.
  3. ALL CONCRETE COMPONENTS ARE SUPPLIED BY OTHERS.

FOUNDATION DESIGNED AND SUPPLIED BY OTHERS

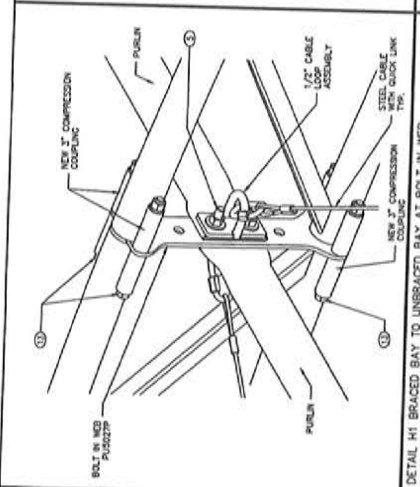
<b>CALHOUN SUPERSTRUCTURE</b> 403598 62240 R1	
DATE: 24/02/2014 DRAWN BY: J.L.C. CHECKED BY: J.H. PROJECT NO.: 403598 62240 R1	SCALE: 1/8" = 1'-0" SHEET NO.: 8 OF 10 PROJECT: 3/15/14-107-007-8 OF 10



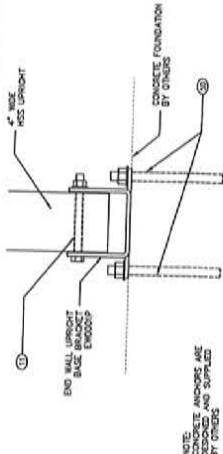


**HARDWARE SCHEDULE (AS OCCURS)**

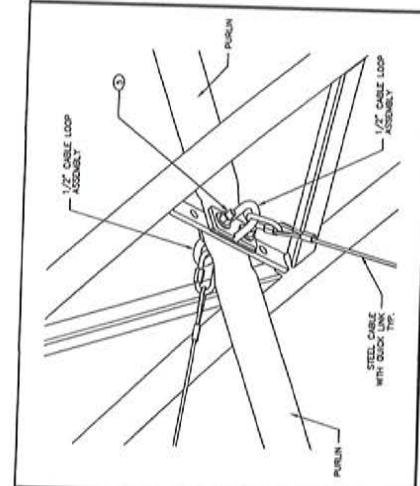
ITEM NO.	DESCRIPTION	PART NO.	QTY	DESCRIPTION	PART NO.
1	HEX BOLT 3/8 X 1-1/2	FAC003P	20	CARRIAGE BOLT 3/8 X 4-1/2	FAC002000G
2	HEX BOLT 1/2 X 1-1/2	FAC003P	20	CARRIAGE BOLT 3/8 X 4-1/2	FAC003P
3	HEX BOLT 1/2 X 2-1/2	FAC003P	20	CARRIAGE BOLT 1/2 X 2	FAC003P
4	HEX BOLT 1/2 X 2-1/2	FAC003P	20	CARRIAGE BOLT 1/2 X 2	FAC003P
5	HEX BOLT 1/2 X 2-1/2	FAC003P	20	CARRIAGE BOLT 1/2 X 2	FAC003P
6	HEX BOLT 1/2 X 2-1/2	FAC003P	20	CARRIAGE BOLT 1/2 X 2	FAC003P
7	HEX BOLT 1/2 X 2-1/2	FAC003P	20	CARRIAGE BOLT 1/2 X 2	FAC003P
8	HEX BOLT 1/2 X 2-1/2	FAC003P	20	CARRIAGE BOLT 1/2 X 2	FAC003P
9	HEX BOLT 1/2 X 2-1/2	FAC003P	20	CARRIAGE BOLT 1/2 X 2	FAC003P
10	HEX BOLT 1/2 X 2-1/2	FAC003P	20	CARRIAGE BOLT 1/2 X 2	FAC003P
11	HEX BOLT 1/2 X 2-1/2	FAC003P	20	CARRIAGE BOLT 1/2 X 2	FAC003P
12	HEX BOLT 1/2 X 2-1/2	FAC003P	20	CARRIAGE BOLT 1/2 X 2	FAC003P
13	HEX BOLT 1/2 X 2-1/2	FAC003P	20	CARRIAGE BOLT 1/2 X 2	FAC003P
14	HEX BOLT 1/2 X 2-1/2	FAC003P	20	CARRIAGE BOLT 1/2 X 2	FAC003P
15	HEX BOLT 1/2 X 2-1/2	FAC003P	20	CARRIAGE BOLT 1/2 X 2	FAC003P
16	HEX BOLT 1/2 X 2-1/2	FAC003P	20	CARRIAGE BOLT 1/2 X 2	FAC003P
17	HEX BOLT 1/2 X 2-1/2	FAC003P	20	CARRIAGE BOLT 1/2 X 2	FAC003P
18	HEX BOLT 1/2 X 2-1/2	FAC003P	20	CARRIAGE BOLT 1/2 X 2	FAC003P
19	HEX BOLT 1/2 X 2-1/2	FAC003P	20	CARRIAGE BOLT 1/2 X 2	FAC003P
20	HEX BOLT 1/2 X 2-1/2	FAC003P	20	CARRIAGE BOLT 1/2 X 2	FAC003P



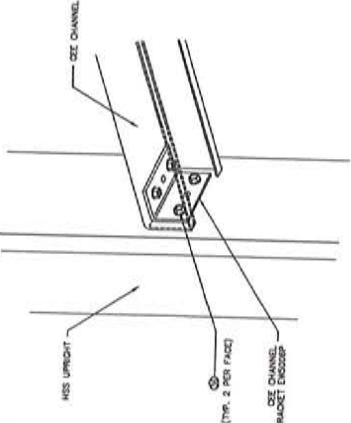
DETAIL H1 BRACED BAY TO UNBRACED BAY AT BOLT IN WEB



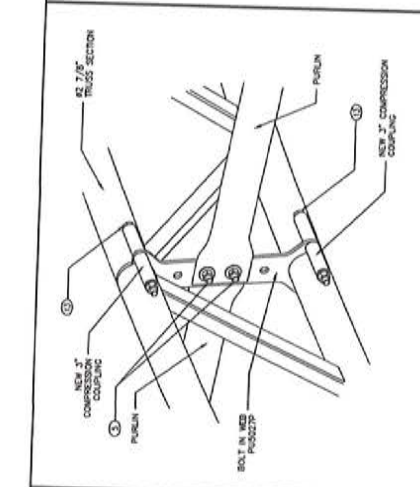
DETAIL J1 ENDWALL UPRIGHT BASE CONNECTION - 4"



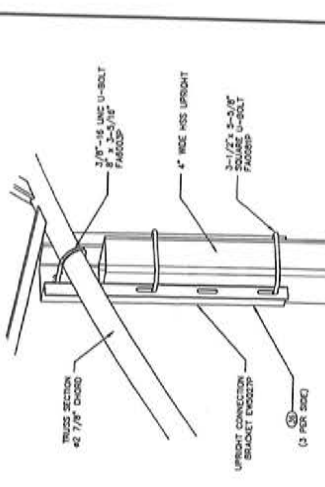
DETAIL H2 BRACED BAY TO UNBRACED BAY AT WELD IN WEB - TWO CABLES



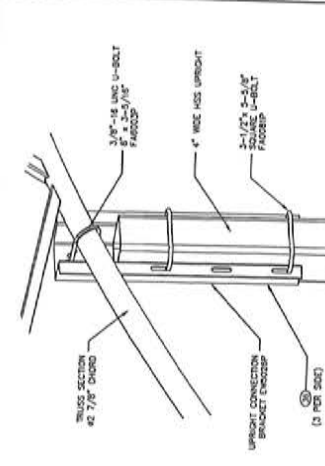
DETAIL I2 UNBRACED BAY TO UNBRACED BAY AT WELD IN WEB



DETAIL I1 UNBRACED TO UNBRACED BAY AT BOLT IN WEB

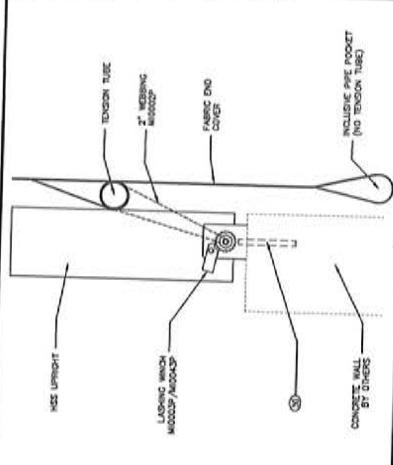


DETAIL L1 ENDWALL UPRIGHT CONNECTION AT TRUSS - 4X6 HSS



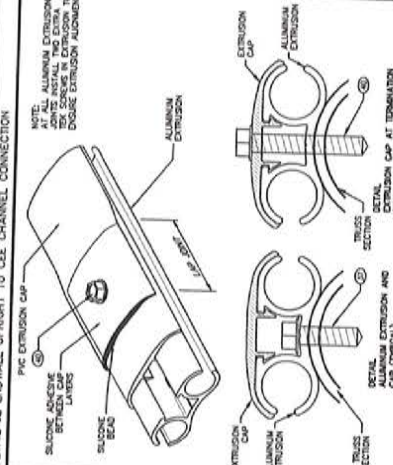
DETAIL L2 ENDWALL UPRIGHT CONNECTION AT TRUSS - 4X4 HSS

PLAN VIEW J1



DETAIL P1 END WALL FABRIC ON HSS ON CONC. WALL AT UPRIGHT

DETAIL J2 ENDWALL UPRIGHT TO CEE CHANNEL CONNECTION



DETAIL Q1 - CC/HT ALUMINUM EXTRUSION AND EXTRUSION CAP (TYPICAL)

ITEM NO.	DESCRIPTION	QTY	UNIT	DESCRIPTION	PART NO.	QTY	UNIT	DESCRIPTION	PART NO.
1	HSS BOLT 3/8 X 1-1/2			HSS BOLT 3/8 X 1-1/2	F4000P			CHARGE BOLT 3/8 X 4	F000000002
2	HSS BOLT 1/2 X 1-1/2			HSS BOLT 1/2 X 1-1/2	F4000P			CHARGE BOLT 1/2 X 4	F4000P
3	HSS BOLT 1/2 X 3-1/2			HSS BOLT 1/2 X 3-1/2	F4000P			CHARGE BOLT 1/2 X 2	F4000P
4	HSS BOLT 1/2 X 3-1/2 GR			HSS BOLT 1/2 X 3-1/2 GR	F4000P			CHARGE BOLT 1/2 X 3	F4000P
5	HSS BOLT 1/2 X 4			HSS BOLT 1/2 X 4	F4000P			CHARGE BOLT 1/2 X 3-1/2	F4000P
6	HSS BOLT 1/2 X 4-1/2			HSS BOLT 1/2 X 4-1/2	F4000P			CHARGE BOLT 1/2 X 3-1/2	F4000P
7	HSS BOLT 1/2 X 5			HSS BOLT 1/2 X 5	F4000P			CHARGE BOLT 1/2 X 4-1/2	F4000P
8	HSS BOLT 1/2 X 5-1/2			HSS BOLT 1/2 X 5-1/2	F4000P			CHARGE BOLT 1/2 X 5-1/2	F4000P
9	HSS BOLT 1/2 X 6-1/2			HSS BOLT 1/2 X 6-1/2	F4000P			CHARGE BOLT 1/2 X 5-1/2	F4000P
10	HSS BOLT 1/2 X 7			HSS BOLT 1/2 X 7	F4000P			CHARGE BOLT 1/2 X 6-1/2	F4000P
11	HSS BOLT 1/2 X 8-1/2			HSS BOLT 1/2 X 8-1/2	F4000P			CHARGE BOLT 1/2 X 7	F4000P
12	HSS BOLT 1/2 X 9-1/2			HSS BOLT 1/2 X 9-1/2	F4000P			CHARGE BOLT 1/2 X 8-1/2	F4000P
13	HSS BOLT 3/8 X 1-1/2			HSS BOLT 3/8 X 1-1/2	F4000P			CHARGE BOLT 3/8 X 4	F4000P
14	HSS BOLT 3/8 X 2			HSS BOLT 3/8 X 2	F4000P			CHARGE BOLT 3/8 X 4	F4000P
15	HSS BOLT 3/8 X 3			HSS BOLT 3/8 X 3	F4000P			CHARGE BOLT 3/8 X 4	F4000P
16	HSS BOLT 3/8 X 4			HSS BOLT 3/8 X 4	F4000P			CHARGE BOLT 3/8 X 4	F4000P
17	HSS BOLT 3/8 X 5			HSS BOLT 3/8 X 5	F4000P			CHARGE BOLT 3/8 X 4	F4000P
18	HSS BOLT 3/8 X 6			HSS BOLT 3/8 X 6	F4000P			CHARGE BOLT 3/8 X 4	F4000P
19	HSS BOLT 3/8 X 7			HSS BOLT 3/8 X 7	F4000P			CHARGE BOLT 3/8 X 4	F4000P
20	HSS BOLT 3/8 X 8			HSS BOLT 3/8 X 8	F4000P			CHARGE BOLT 3/8 X 4	F4000P
21	HSS BOLT 3/8 X 9			HSS BOLT 3/8 X 9	F4000P			CHARGE BOLT 3/8 X 4	F4000P
22	HSS BOLT 3/8 X 10			HSS BOLT 3/8 X 10	F4000P			CHARGE BOLT 3/8 X 4	F4000P
23	HSS BOLT 3/8 X 11			HSS BOLT 3/8 X 11	F4000P			CHARGE BOLT 3/8 X 4	F4000P
24	HSS BOLT 3/8 X 12			HSS BOLT 3/8 X 12	F4000P			CHARGE BOLT 3/8 X 4	F4000P
25	HSS BOLT 1/2 X 1-1/2			HSS BOLT 1/2 X 1-1/2	F4000P			CHARGE BOLT 1/2 X 4	F4000P
26	CONCRETE ANCHORS BY OTHERS			CONCRETE ANCHORS BY OTHERS					

FOUNDATION DESIGNED AND SUPPLIED BY OTHERS

CALHOUN SUPERSTRUCTURE

DETAILS 62 CC SERIES 403598 62x40 RI

DATE: 8/26/14  
 REVIEWER: [Signature]  
 DATE: 8/26/14  
 DRAWN BY: [Signature]  
 DATE: 8/26/14  
 CHECKED BY: [Signature]  
 DATE: 8/26/14  
 PROJECT NO.: 403598  
 SHEET NO.: 62 CC SERIES  
 SHEET TOTAL: 403598 62x40 RI