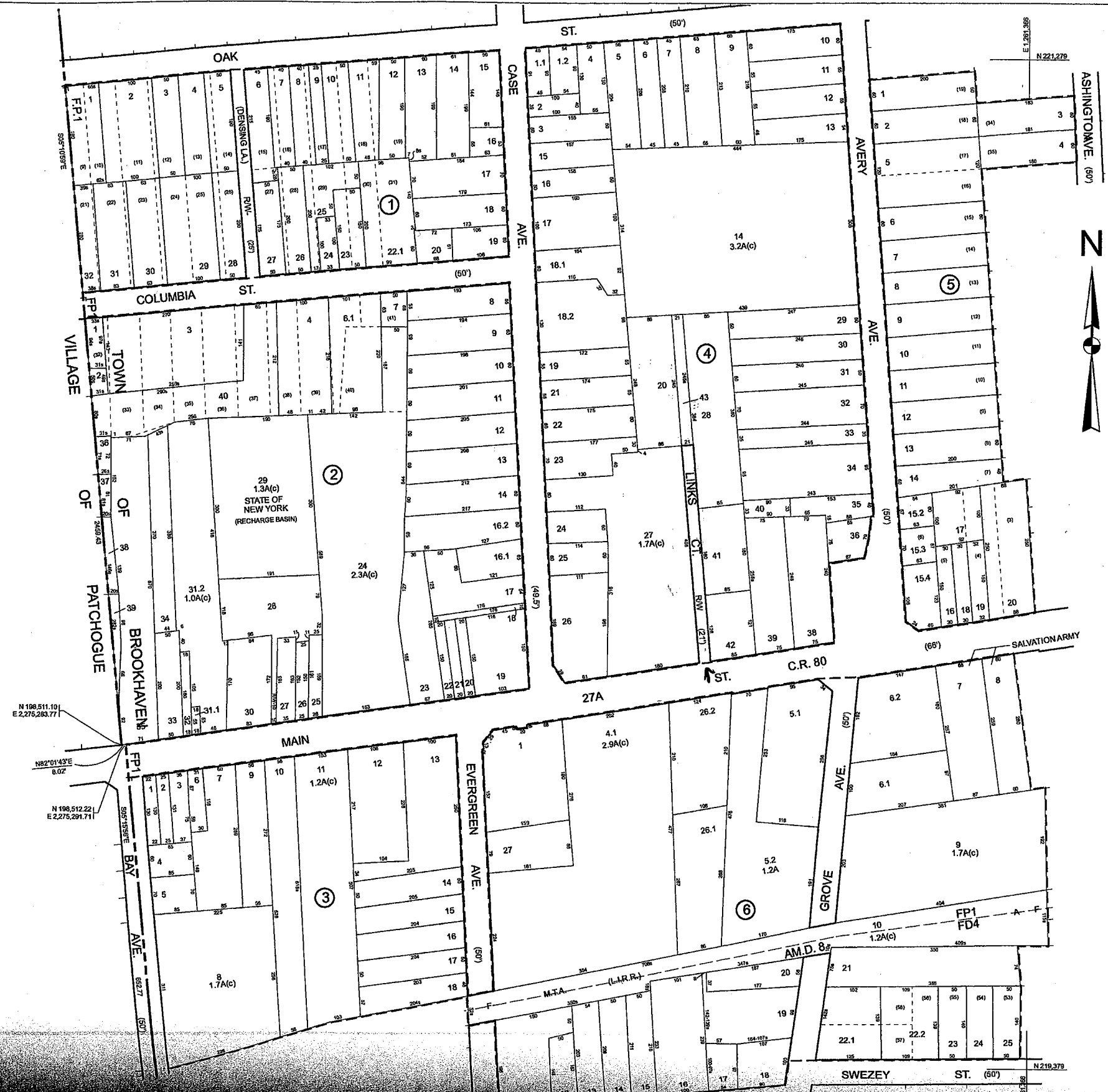




Revisions  
 03-18-99  
 02-08-01  
 12-06-01  
 02-06-13  
 03-22-13  
 04-25-13  
 07-12-13  
 08-09-13

N 221,279  
 E 1,291,369



N 196,511.10  
 E 2,275,293.77  
 N 82°01'43"E  
 8.02  
 N 196,512.22  
 E 2,275,291.71

NOTE:  
 AN APPARENT OVERLAP CONDITION EXISTS WITHIN  
 BLOCK 11, TOWN OF PATCHOGUE, NY & 219,379